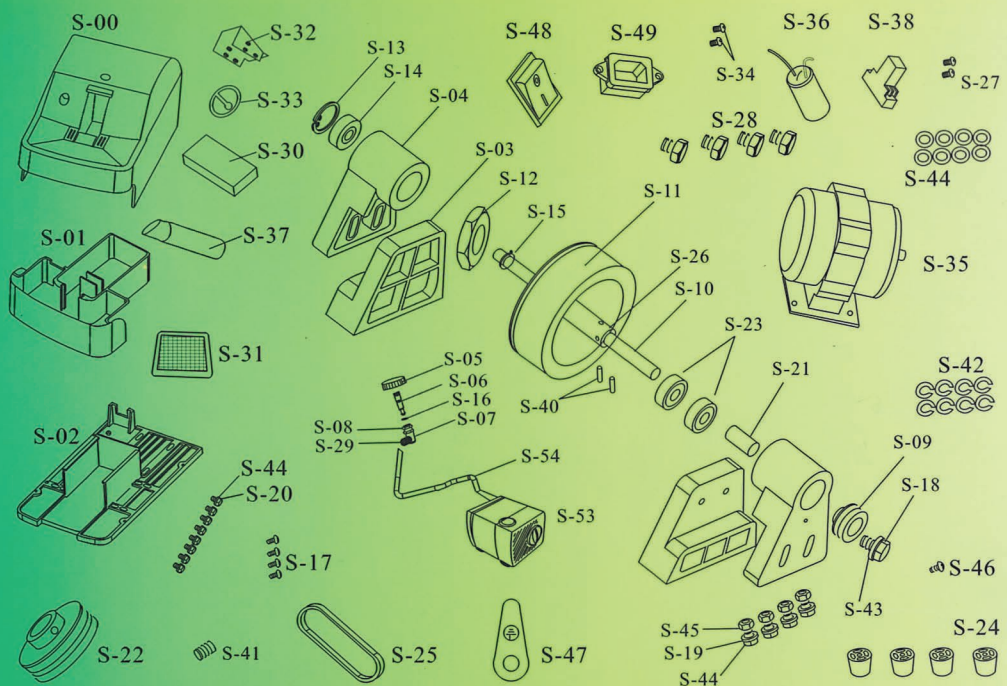


## Components List



S-00: upper cover	S-17: cross screw	S-34: cross screw
S-01: water container	S-18: M6 screw	S-35: motor
S-02: baseboard	S-19: M6 screw	S-36: capacitor
S-03: holder base	S-20: M6 screw	S-37: sensor switch
S-04: holder	S-21: axle bushing	S-38: relay
S-05: water valve knob	S-22: belt wheel (motor)	S-40: spring cylinder stopper
S-06: water valve rod	S-23: ball bearing	S-41: M6 flat screw
S-07: water valve seat	S-24: rubber feet	S-42: M6 spring washer
S-08: water valve screw	S-25: belt	S-43: M6 flat washer
S-09: belt wheel (diamond wheel)	S-26: diamond wheel axle sleeve	S-44: M6 flat washer
S-10: diamond wheel axle	S-27: cross screw	S-45: M6 screw nut
S-11: diamond wheel	S-28: M6 screw	S-46: M4 cross screw
S-12: locking screw	S-29: copper tube	S-47: grounding mark
S-13: hole locking spring	S-30: sponge pad	S-48: power switch
S-14: ball bearing	S-31: filter net	S-49: plug socket
S-15: axle locking spring	S-32: water-blocking plate	S-53: water pump

# COT-H831

## Hand Edger

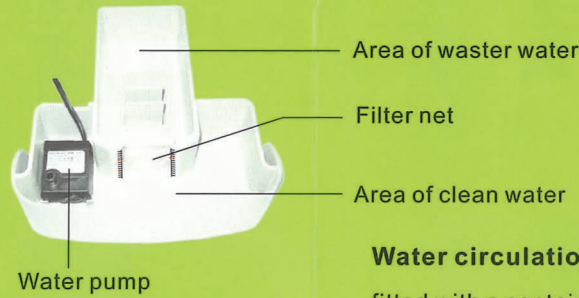
### User's Manual



## Mechanism and Accessories

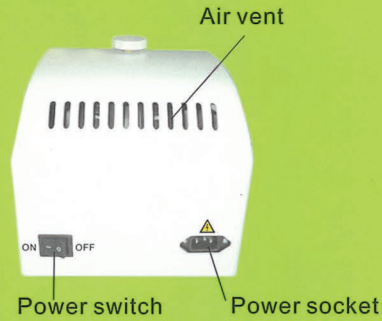


**Sensor:** The sensor starts/stop the diamond wheel automatically when your hands approach/far away from the grinder work area. The sensor works only when needed, so you can save time and electric energy in safety. The sensor has a long service life, it can be also replaced easily.



Area of waste water  
Filter net  
Area of clean water

**Water circulation system:** The grinder is fitted with a container for water located inside the housing. The filter net keep clean water for water pump avoiding blocked. Water can be fed to the diamond wheel with water valve and sponge inside the housing, big volume of water when needed with water valve, little volume of water when needed with sponge. Water container can be pulled out freely by hand when water to be replaced after reused long. The filter net can be cleaned with reserved brush.



**Power switch:** Supply power for sensor  
**Air vent:** Exhaust of the heat air that working motor generates  
**Power socket:** Connect the power plug

**⚠ Attention:** If the machine won't be used for long, please remember to keep the water container clean without water.

## Technical Parameters

Power Supply: AC 100-120V/60HZ  
200-240V/50HZ

Motor: 150W

Water pump: 3W

Dimension with packing:

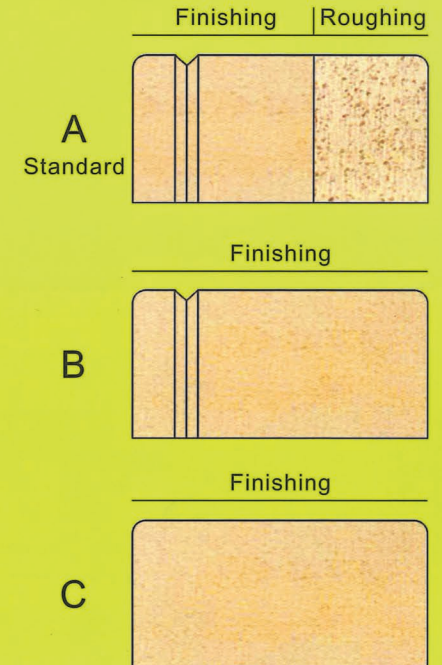
430mm×270mm×280mm

Gross weight: 9kgs

## Diamond Wheel

Width 35mm

Diameter 110mm



## Operation Guide



Take out the machine by the lifting rope.



Pull out the water container



Pour water into the container till to the red mark of water standard scale



Connect the power plug with socket.



Move hands into the grinder work area.